

Digestive System “Person”

Follow each activity **in order** to complete the “person”.
Label in **pen neatly**, and color. **SPELLING COUNTS!**

A. Activities:

Glue Activity Sheets 1 and 2 together to make your display sheet for the digestive system.

B. Activities:

Locate diagram 5 on Activity Sheet 4. Color the tongue red, the teeth yellow, and the salivary glands blue. Next, cut out diagram 5 and glue it to your display sheet. Then, **label** the tongue, teeth, and salivary glands.

C. Activities:

Locate diagram 6 on Activity Sheet 4 and diagram 3 on Activity Sheet 3. Color the esophagus orange and the stomach purple. Next, cut out diagram 6 and 3 and glue them to your display sheet. Then, **label** the esophagus and stomach.

D. Activities:

Locate diagram 1 on Activity Sheet 3. Color the gall bladder green, the bile duct yellow, the pancreatic duct blue, the pancreas black, and the liver brown. Next, cut out diagram 1 and glue it to your display sheet. Then, **label** the gall bladder, bile duct, pancreatic duct, pancreas, and liver.

E. Activities:

Locate diagram 2 on Activity Sheet 3. Color the small intestine red. Next, cut out diagram 2 and glue it to your display sheet. Then, **label** the small intestine.

F. Activities:

Locate diagram 4 on Activity Sheet 4. Color large intestine brown and the appendix green. Next, cut out diagram 4 and glue it to your display sheet. Then, **label** the large intestine, appendix, rectum, and anus.

G. Activities:

Locate diagram 7 on your display sheet. Color the artery and capillary to the left of the slash mark red. Color the vein and capillary to the right of the slash mark blue. This indicates the change of oxygenated blood to deoxygenated blood. Color the villi yellow.

H. Activities:

Using *alliteration*, give your “person” a name starting with DIGESTIVE ----- and write it under your name.

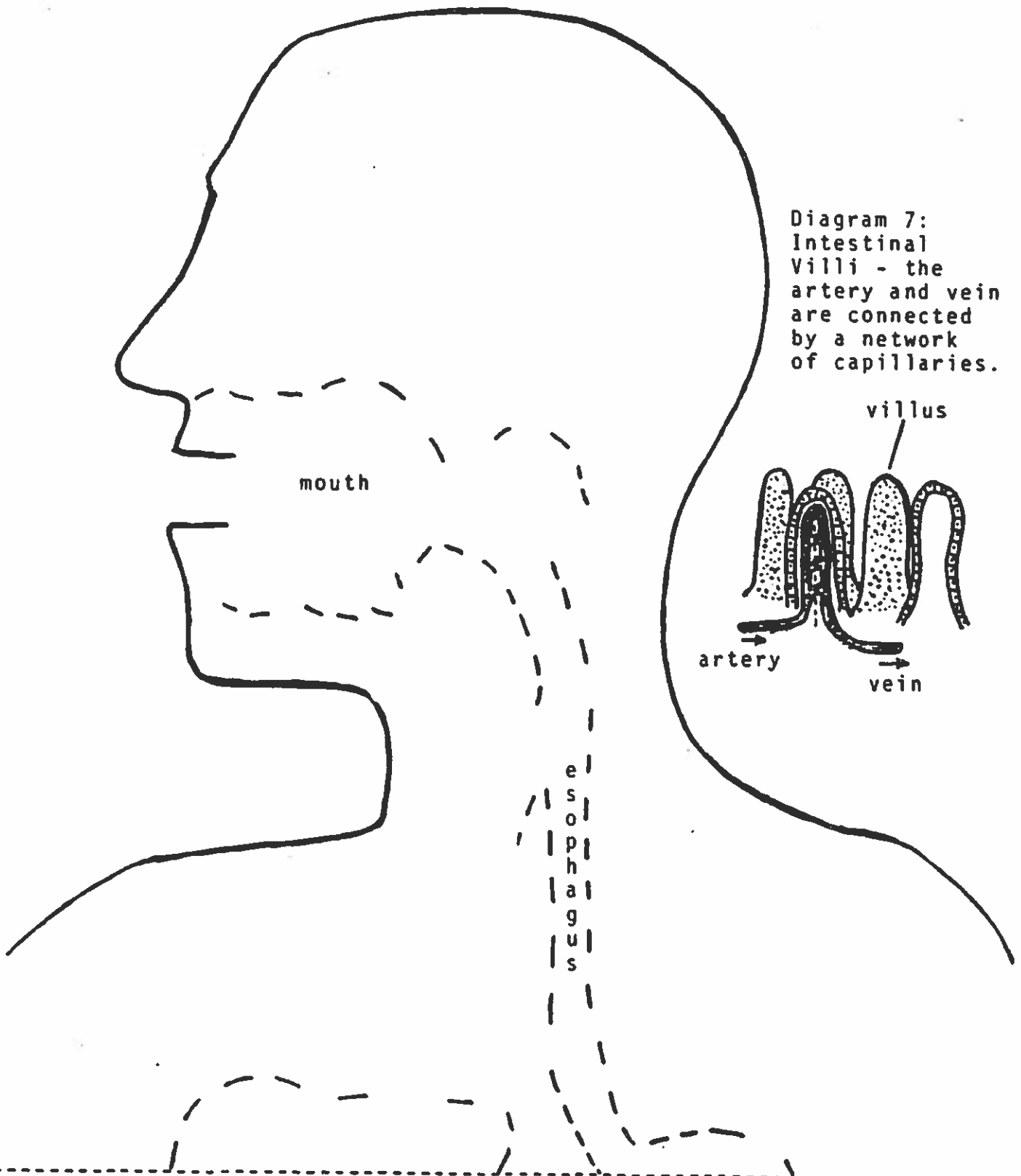
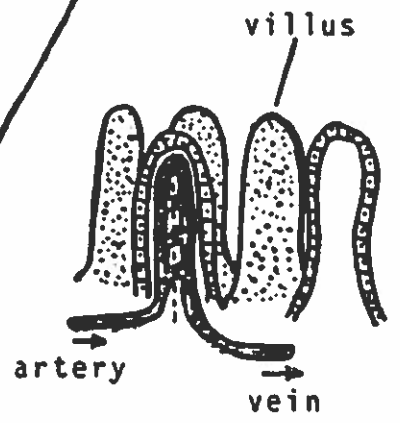
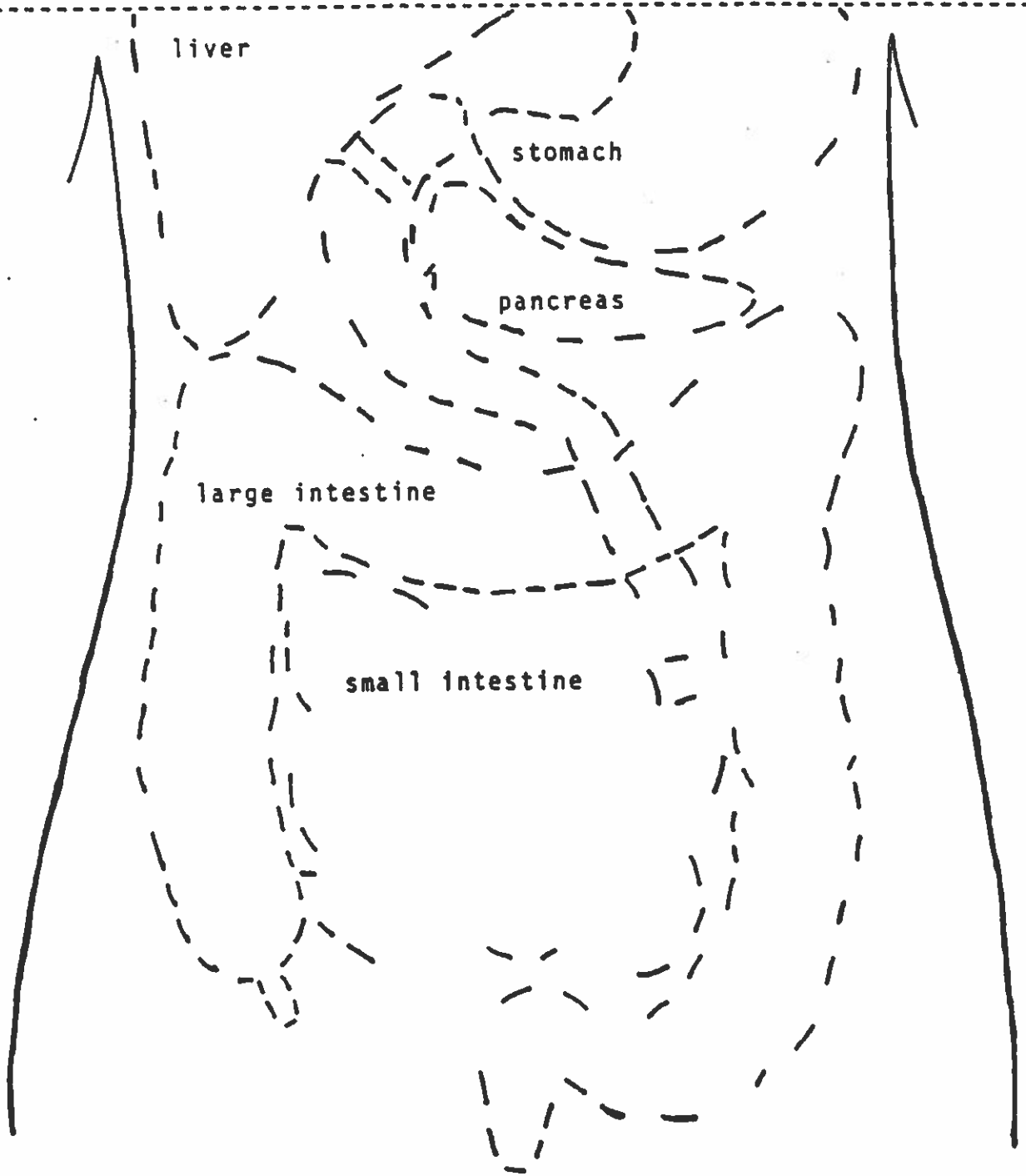


Diagram 7:
Intestinal
Villi - the
artery and vein
are connected
by a network
of capillaries.



TRIM HERE

GLUE HERE



Activity Sheet 2
(DIGESTIVE SYSTEM-Page 8)

DIAGRAM 1:
Pancreas and Liver

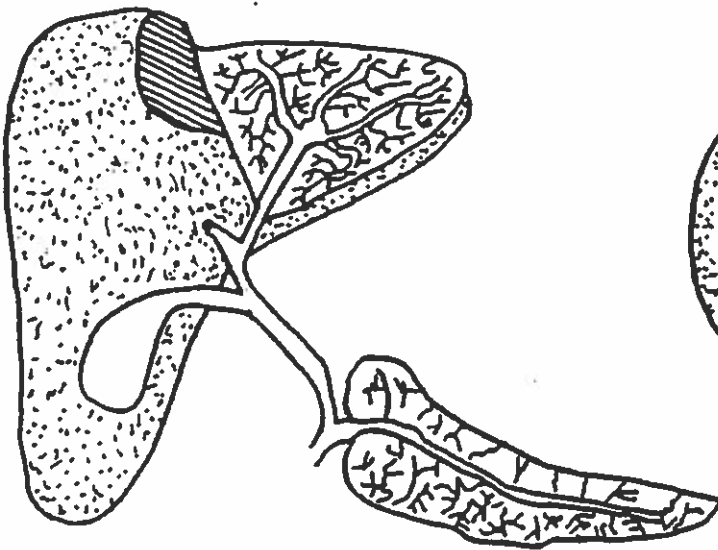
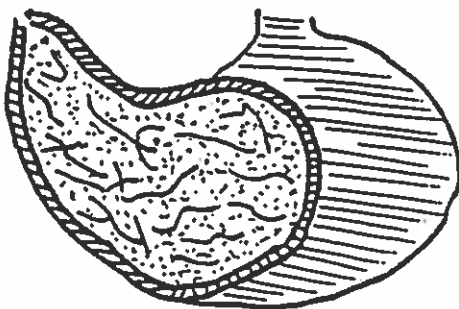


DIAGRAM 2:
Small Intestine



DIAGRAM 3:
Stomach



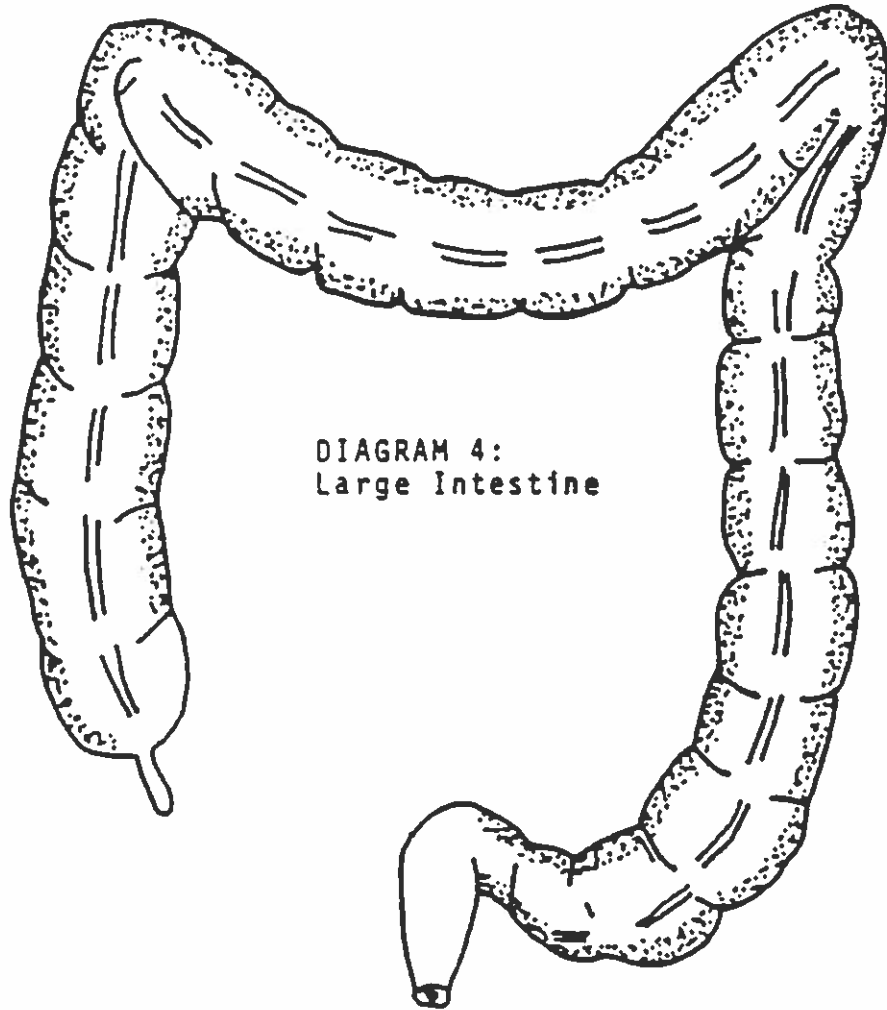


DIAGRAM 4:
Large Intestine

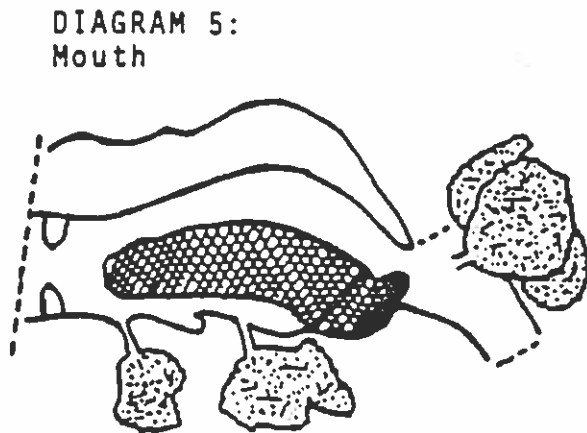


DIAGRAM 5:
Mouth

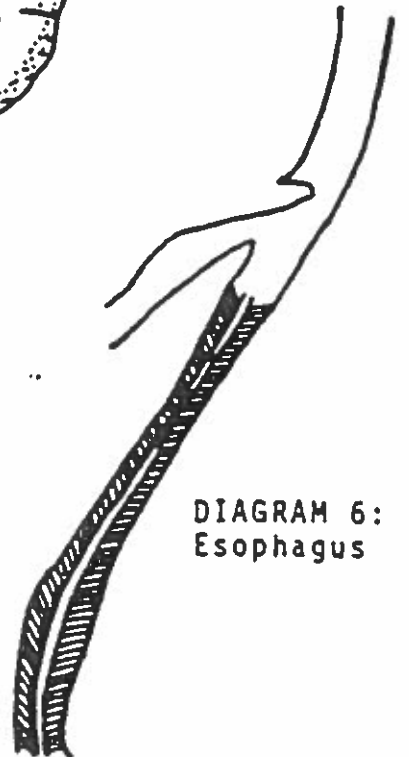


DIAGRAM 6:
Esophagus